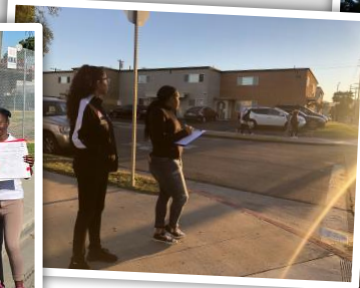
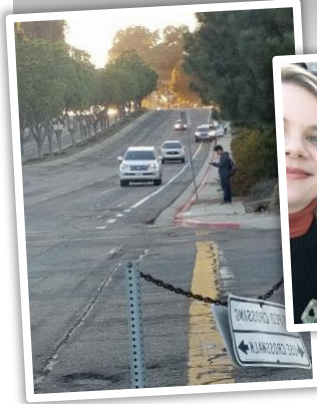


ROADWATCH

2019



WHAT IS ROADWATCH?

ROADWATCH is a one-hour, state-wide data collection event to assess driving behaviors near schools and other youth-centric locations, during a high-traffic time. From 7:00am – 8:00am on October 8th, 2019, FNL chapters everywhere will count the number of distractions observed in an identified intersection, report the data to the California Friday Night Live Partnership (CFNLP) for analysis, and develop a snapshot of distracted driving behaviors in California. The CFNLP will provide a press release template to customize with local data and release to local media outlets, while also disseminating a state-wide press release to larger media outlets, creating a media frenzy to draw attention to traffic safety issues and the work Friday Night Live chapters are doing to better their communities. Take it a step further and use the data to fight for change; show city council, city engineering, school administrators or other decision makers exactly what is happening on their streets and propose solutions to minimize the dangers of distracted driving. Even if traffic safety is not a chapter's focus, ROADWATCH is a great way to engage young people in a data collection process and show the value of doing assessment to understand and address an issue. *For more information, questions, or comments, contact the CFNLP at (559) 733-6496 or kelliieg@tcoe.org.*

REMEMBER: SAFETY FIRST!

HOW TO :

1. Discuss the project with your chapter.
2. Register your ROADWATCH locations:
<https://forms.gle/28S6C9SWp5q5b7fm7>
3. Visit potential survey sites prior to October 8th to determine the best time, locations & number of participants needed to conduct an accurate assessment.
4. Inform appropriate school staff of the activity.
5. Prepare materials: print extra tally sheets, gather clipboards & pencils. Consider hosting a booth nearby (*away from the intersection*) to provide more information about Friday Night Live.
6. Observe driving behaviors & tally the results!
7. Submit observations to the CFNLP as soon as possible, prior to 12:00pm on October 8th:
<https://forms.gle/pJ5m5JU26qY6nvi87>
8. Send photos to kelliieg@tcoe.org

